

Daikin air conditioners  
for your home

WALL MOUNTED UNIT

**R-410A**



www.daikin.eu

**FTKS/FTXS-C**  
**FTKS/FTXS-F**





*Daikin air conditioners lead the industry with their energy savings and wide model range. These C and F series offer you a flat panel design with high performances and great energy efficiency.*

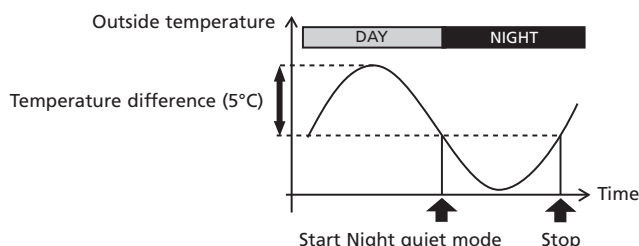
## COMFORT

- The **vertical auto swing** automatically moves the flaps up and down to ensure an even distribution of air throughout the room.
- The **horizontal auto swing** automatically moves the louvers to the left and right to cover the room with cool/warm air (F series only).
- The **3D air flow** function combines the vertical and horizontal auto swing, circulating a stream of cool/warm air right to the corners of even large spaces (F series only).
- You have the choice of **5 fan speeds** to select: from high to super low.
- Daikin's special **dry programme** reduces humidity in the room without variations in room temperature.
- The **powerful operation function** boosts the air flow to a maximum volume for a 20-minute period, (e.g. when you come home on a hot day, rapid cooling is required). After this, the unit automatically returns to its previous settings.



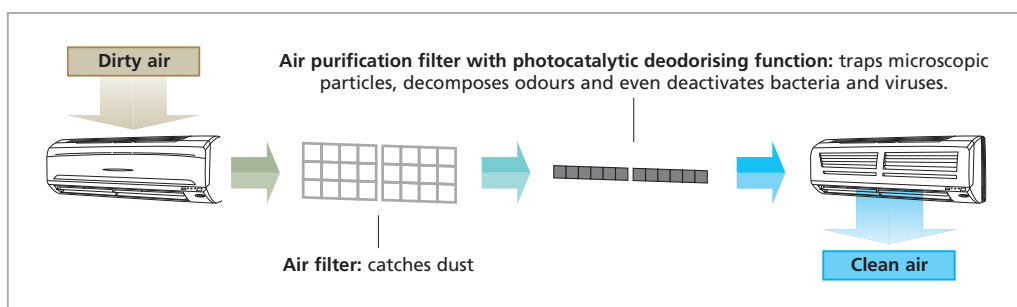


- The **night set mode** is automatically selected by pushing the 'off' timer button. This function prevents any sudden change in room temperature by gently raising/lowering the temperature before the air conditioner stops, so you can sleep more comfortably.
- The indoor unit is **extremely quiet in operation**. The sound levels are as low as 22dB(A), comparable to rustling leaves.  
The **outdoor unit silent operation\*** function increases comfort by automatically lowering the operating sound of the outdoor unit by 3dB(A).  
(\* only in combination with RK/XS-F outdoor units)
- The **night quiet mode** reduces the operating sound of the outdoor unit by another 3 dB(A) at night.



## FILTER

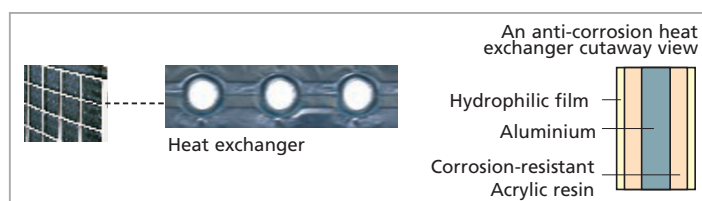
- This wall mounted unit is equipped with an **air purification filter with photocatalytic deodorising function**. The filter is able to trap microscopic particles, decompose odours and even remove bacteria and deactivate viruses. The filter lasts for 3 years without replacement if washed about every 6 months. (FTK/XS-C)



- This wall mounted unit is equipped with a **titanium apatite photocatalytic air purification filter**. Micron scale fibres in this filter trap dust while the titanium apatite absorbs organic contaminants such as bacteria and viruses. In addition, the titanium oxide is activated by natural light, allowing it to break down and eliminate odours. The filter lasts for 3 years without replacement if washed about every 6 months. (FTK/XS-F)

## FLEXIBLE INSTALLATION AND EASY TO USE AND MAINTAIN

- The outdoor unit can be installed on a roof or terrace or placed against an outside wall.
- Daikin remote controls give you **easy control at your fingertips**.
- Malfunction codes are shown on the digital display panel of the infrared remote control for **fast and easy maintenance**.
- Special anti-corrosion treatment of the outdoor unit's heat exchanger fin, gives **great resistance against acid rain and salt corrosion**.  
Additional resistance is provided by a rust proof steel sheet on the underside of the unit.



Infrared remote control (Standard)  
ARC433A70

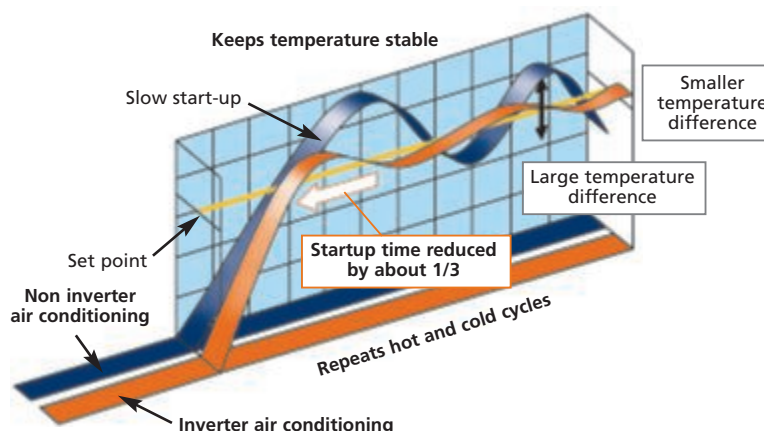
## ENERGY EFFICIENT

- **Energy label:** up to class A

- **Inverter technology :**

1. Improved energy efficiency:

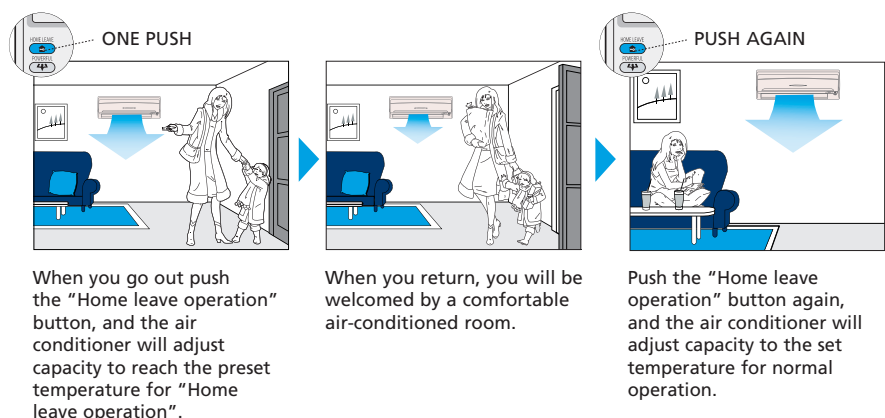
The use of integrated inverter control ensures maximum **energy efficiency** by supplying only the required heating or cooling load where a standard non inverter unit would supply maximum load in an on/off regime



2. Improved comfort:

The rapid start up time provided by the inverter increases **comfort** by reducing the lead time in obtaining the required indoor temperature. Once the required temperature is reached, the inverter unit continuously scans the room for small changes and adjusts the room temperature in seconds, thereby increasing comfort once again.

- The **movement sensor** detects whether anyone is in the room. When the room is empty, the unit switches to economy mode and restarts when a person enters the room.
- The **home leave operation** button prevents large temperature differences by continuously operating at a minimum (heating mode) or maximum (cooling mode) preset level while you're out or sleeping. It also allows the indoor temperature to return quickly to your favourite comfort level.



## APPLICATION OPTIONS

- This model can be used for cooling only or heating.
- It is possible to use the indoor unit in pair (connecting 1 indoor to 1 outdoor) and multi applications (connecting up to 9 units in several rooms to 1 outdoor unit).



# Capacity and power input

COOLING ONLY - INVERTER CONTROLLED (air cooled)				FTKS20C RK20E	FTKS25C RK25E	FTKS35C RK35E	FTKS50F RKS50F	FTKS60F RKS60F	FTKS71F RKS71F
Cooling capacity	min~nom~max	kW		1.2~2.0~2.6	1.2~2.5~3.0	1.2~3.4~3.8	1.7~5.0~6.0	1.7~6.0~6.7	2.3~7.1~8.5
Nominal input	min~nom~max	kW		0.30~0.58~0.86	0.30~0.77~1.07	0.30~1.06~1.30	0.44~1.55~2.08	0.44~1.99~2.40	0.57~2.35~3.20
EER				3.45	3.25	3.21	3.23	3.02	3.02
Energy label				A	A	A	A	B	B
Annual energy consumption	cooling	kWh		290	385	530	775	995	1175
HEAT PUMP - INVERTER CONTROLLED (air cooled)				FTXS20C RX20E	FTXS25C RX25E	FTXS35C RX35E	FTXS50F RXS50F	FTXS60F RXS60F	FTXS71F RXS71F
Cooling capacity	min~nom~max	kW		1.2~2.0~2.6	1.2~2.5~3.0	1.4~3.4~3.8	1.7~5.0~6.0	1.7~6.0~6.7	2.3~7.1~8.5
Heating capacity	min~nom~max	kW		1.2~2.7~4.1	1.2~3.4~4.5	1.4~3.7~5.0	1.7~5.8~7.7	1.7~7.0~8.0	2.3~8.2~10.2
Nominal input	cooling	min~nom~max	kW	0.30~0.58~0.86	0.30~0.77~1.07	0.30~1.06~1.30	0.44~1.55~2.08	0.44~1.99~2.40	0.57~2.35~3.20
	heating	min~nom~max	kW	0.29~0.71~1.33	0.29~0.94~1.46	0.19~1.02~1.59	0.40~1.60~2.53	0.40~2.04~2.81	0.52~2.55~3.82
EER				3.45	3.25	3.21	3.23	3.02	3.02
COP				3.80	3.62	3.63	3.63	3.43	3.22
Energy label	cooling			A	A	A	A	B	B
	heating			A	A	A	A	B	C
Annual energy consumption	cooling	kWh		290	385	530	775	995	1175

Note :

1) Energy label: scale from A (most efficient) to G (less efficient).

2) Annual energy consumption: based on average use of 500 running hours per year at full load (=nominal conditions)

POSSIBLE COMBINATIONS		2MXS40F(1)	2MXS50F(2)	3MXS50E(3)	4MXS58E(3)	4MXS75F(4)	5MXS90E(5)	2MXS40F*(1)	2MXS50F*(2)	3MXS52E*(3)	4MXS68F*(4)	4MXS80E*(5)	5MXS90E*(5)	RMXS112E*	RMXS140E*	RMXS160E*
Max. n° of indoor units		2	2	3	4	4	5	2	2	3	4	5	7	8	9	
Cooling only	FTKS20C	●	●	●	●	●	●									
	FTKS25C	●	●	●	●	●	●									
	FTKS35C	●	●	●	●	●	●									
	FTKS50F				●	●	●									
	FTKS60F					●	●									
	FTKS71F					●	●									
Heat pump	FTXS20C							●	●	●	●	●	●	●	●	●
	FTXS25C							●	●	●	●	●	●	●	●	●
	FTXS35C							●	●	●	●	●	●	●	●	●
	FTXS50F									●	●	●	●	●	●	●
	FTXS60F										●	●	●	●	●	●
	FTXS71F											●	●	●	●	●
Max. cooling capacity	kW	4.50	5.40	7.07	7.30	9.33	10.50	4.50	5.40	7.30	8.73	9.60	10.50	11.2	14.0	15.5
Max. heating capacity	kW	N/A	N/A	N/A	N/A	N/A	N/A	4.70	6.40	8.30	10.68	11.00	11.50	12.5	16.0	17.5
Max. PI cooling	kW	1.35	1.70	2.16	2.24	3.06	3.98	1.35	1.70	2.25	2.95	3.56	4.01	3.50	5.09	5.40
Max PI heating	kW	N/A	N/A	N/A	N/A	N/A	N/A	1.18	1.65	2.51	2.58	3.11	3.46	3.93	5.21	5.43

Notes:

1 For more detailed information, please consult our multi model/combination tables catalogue or your local dealer

2 (1) The indicated cooling, heating capacities and power input are indicative and are those connected to wall mounted D/E (20,25,35 class) series

(2) The indicated cooling, heating capacities and power input are indicative and are those connected to wall mounted D/E (20,25,35,50 class) series

(3) The indicated cooling, heating capacities and power input are indicative and are those connected to wall mounted D (20,25,35 class) / E (50 class) series

(4) The indicated cooling, heating capacities and power input are indicative and are those connected to wall mounted D (20,25,35,50 class) / F (60,71 class) series

(5) The indicated cooling, heating capacities and power input are indicative and are those connected to wall mounted D (20,25,35,50 class) / E (60,71 class) series

3 N/A means not applicable since this unit is a cooling only unit

4 \* At least two indoor units should be connected to these multi outdoor units



## Specifications indoor units

COOLING ONLY				FTKS20C	FTKS25C	FTKS35C	FTKS50F	FTKS60F	FTKS71F
Dimensions	HxWxD	mm	273x784x195			290x1050x238			
Weight		kg	7.5			12			
Colour			White			White			
Air flow rate	H/L/SL	m³/min	7.7/4.2/3.6	7.7/4.2/3.6	7.7/4.4/3.8	14.3 (H)	16.8 (H)	16.2 (H)	
Fan speed			5 steps, silent and auto			5 steps, silent and auto			
Sound pressure level	H/L/SL	dB(A)	38/25/22	38/25/22	39/26/23	43/34	45/36	46/37	
Sound power level	H	dB(A)	56	56	57	59	61	62	
Piping connections	liquid	mm	ø6.4			ø6.4			
	gas	mm	ø9.5			ø12.7			
	drain	mm	ø18.0			ø18.0			
Heat insulation			Both liquid and gas pipes			Both liquid and gas pipes			
HEAT PUMP				FTXS20C	FTXS25C	FTXS35C	FTXS50F	FTXS60F	FTXS71F
Dimensions	HxWxD	mm	273x784x195			290x1050x238			
Weight		kg	7.5			12			
Colour			White			White			
Air flow rate	cooling	H/L/SL	m³/min	7.7/4.2/3.6	7.7/4.2/3.6	7.7/4.4/3.8	14.3 (H)	16.8 (H)	16.2 (H)
	heating	H/L/SL	m³/min	7.8/5.3/4.6	7.8/5.3/4.6	8.1/5.3/4.6	16.1(H)	17.4(H)	18.2 (H)
Fan speed				5 steps, silent and auto			5 steps, silent and auto		
Sound pressure level	cooling	H/L/SL	dB(A)	38/25/22	38/25/22	39/26/23	43/34	45/36	46/37
	heating	H/L/SL	dB(A)	38/28/25	38/28/25	39/29/26	42/33	44/35	46/37
Sound power level	cooling	H	dB(A)	56	56	57	59	61	62
Piping connections	liquid	mm	ø6.4			ø6.4			
	gas	mm	ø9.5			ø12.7			
	drain	mm	ø18.0			ø18.0			
Heat insulation			Both liquid and gas pipes			Both liquid and gas pipes			

## Indoor units: FTKS/FTXS-C FTKS/FTXS-F



FTK/XS20,25,35C



FTK/XS50,60,71F

## Specifications outdoor units

COOLING ONLY				RK20E	RK25E	RK35E	RKS50F	RKS60F	RKS71F
Dimensions	HxWxD	mm	550x765x285			735x825x300		735x825x300	770x900x320
Weight		kg	30			48		48	71
Casing colour			Ivory white			Ivory white			
Sound pressure level	H/L	dB(A)	46/43	46/43	47/44	47/44	49/46	52/49	
Sound power level	H	dB(A)	61	61	62	61	63	66	
Compressor		type	Hermetically sealed swing			Hermetically sealed swing			
Refrigerant type			R-410A			R-410A			
Additional refrigerant charge		kg/m	0.02 (for piping length exceeding 10m)			0.02 (for piping length exceeding 10m)			
Maximum piping length		m	15	15	15	30			
Maximum level difference		m	10			20			
Operation range	from ~ to	°CDB	10~46			-10~46			
HEAT PUMP				RX20E	RX25E	RX35E	RXS50F	RXS60F	RXS71F
Dimensions	HxWxD	mm	550x765x285			735x825x300		735x825x300	770x900x320
Weight		kg	30			48		48	71
Casing colour			Ivory white			Ivory white			
Sound pressure level	cooling	H/L	dB(A)	46/43	46/43	47/44	47/44	49/46	52/49
	heating	H/L	dB(A)	47/44	47/44	48/48	48/45	49/46	52/49
Sound power level	cooling	H	dB(A)	61	61	62	61	63	66
	heating	H	dB(A)	62	62	63	62	62	66
Compressor		type	Hermetically sealed swing			Hermetically sealed swing			
Refrigerant type			R410A			R-410A			
Additional refrigerant charge		kg/m	0.02 (for piping length exceeding 10m)			0.02 (for piping length exceeding 10m)			
Maximum piping length		m	15	15	15	30			
Maximum level difference		m	10			20			
Operation range	cooling	from ~ to	°CDB			-10~46			
	heating	from ~ to	°CWB			-15~18			

\*\* Possibility to extend the operation range down to -15°C by turning ON the switch on the outdoor unit PCB. In this case, the unit will stop operation at -20°C or lower and will recover when temperature rises again.



## Accessories: control systems

INDOOR UNITS		FTK/XS20C	FTK/XS25C	FTK/XS35C	FTK/XS50F	FTK/XS60F	FTK/XS71F
Wiring adapter for time clock/ remote control (1)	normal open contact		KRP413A1S			KRP413AA1S	
	normal open pulse contact		KRP413A1S			KRP413AA1S	
Centralised control board	up to 5 rooms (2)		KRC72 (A)			KRC72 (A)	
Central remote control			DCS302C51			DCS302CA51	
Unified ON/OFF control			DCS301B51			DCS301BA51	
Schedule timer			DST301B51			DCT301BA51	
Interface adapter (3)			KRP928A2S			KRP928BA2S	

(1) Wiring adapter is supplied by Daikin. Timer and other devices: field supply.

(2) Wiring adapter is also required for each indoor unit.

(3) For DIII-NET adapter

## Accessories: indoor units

INDOOR UNITS	FTK/XS20C	FTK/XS25C	FTK/XS35C	FTK/XS50F	FTK/XS60F	FTK/XS71F
Air purification filter with photocatalytic deodorising function (with frame)		KAF918A3			-	
Air purification filter with photocatalytic deodorising function (without frame)		KAF918A4			-	
Anti-theft protection for remote control		KKF917AA4			KKF917AA4	
Titanium apatic photocatalytic air purification filter (without frame)		-			KAF952B42	

## Accessories: outdoor units

OUTDOOR UNITS	RK/X20E	RK/X25E	RK/X35E	RK/XS50F	RK/XS60F	RK/XS71F
Air direction adjustment grille		KPW937(A)4			KPW945(A)4	
Drain plug (1)		-			KKP937(A)4	

(1) Only heat pump models

Note: 1) VM = 1~, 220~240/220~230V, 50/60Hz / V1 = 1~, 220~240V, 50Hz.

2) Nominal cooling capacities are based on: indoor temperature 27°CDB/19°CWB • outdoor temperature 35°CDB • refrigerant piping length 7.5m • level difference 0m.

3) Nominal heating capacities are based on: indoor temperature 20°CDB • outdoor temperature 7°CDB/6°CWB • refrigerant piping length 7.5m • level difference 0m.

4) Capacities are net, including a deduction for cooling (an addition for heating) for indoor fan motor heat.

5) Units should be selected on nominal capacity. Max. capacity is limited to peak periods.

6) The sound pressure level is measured via a microphone at a certain distance from the unit (for measuring conditions: please refer to the technical databooks).

7) The sound power is an absolute value indicating the "power" which a sound source generates.



In all of us,  
a green heart



Daikin's unique position as a manufacturer of air conditioning equipment, compressors and refrigerants has led to its close involvement in environmental issues. For several years Daikin has had the intention to become a leader in the provision of environmental friendly products. This challenge demands the eco design and development of a wide range of products and an energy management system; which involves energy conservation and reduction of waste.



Daikin Europe N.V. is approved by LRQA for its Quality Management System in accordance with the ISO9001 standard. ISO9001 pertains to quality assurance regarding design, development, manufacturing as well as to services related to the product.



ISO14001 assures an effective environmental management system in order to help protect human health and the environment from the potential impact of our activities, products and services and to assist in maintaining and improving the quality of the environment.



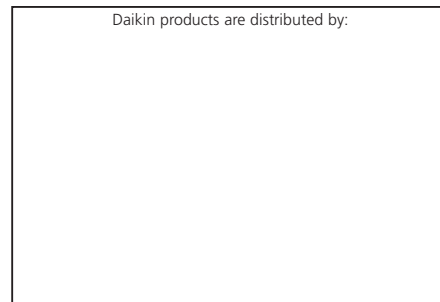
Daikin units comply with the European regulations that guarantee the safety of the product.



Daikin Europe NV participates in the Eurovent Certification Programme for Air Conditioners (AC), Liquid Chilling Packages (LCP) and Fan Coil Units (FC); the certified data of certified models are listed in the Eurovent Directory. Multi units are Eurovent certified for combinations up to 2 indoor units.

The present leaflet is drawn up by way of information only and does not constitute an offer binding upon Daikin Europe N.V.. Daikin Europe N.V. has compiled the content of this leaflet to the best of its knowledge. No express or implied warranty is given for the completeness, accuracy, reliability or fitness for particular purpose of its content and the products and services presented therein. Specifications are subject to change without prior notice. Daikin Europe N.V. explicitly rejects any liability for any direct or indirect damage, in the broadest sense, arising from or related to the use and/or interpretation of this leaflet. All content is copyrighted by Daikin Europe N.V..

Daikin products are distributed by:



#### DAIKIN EUROPE N.V.

Naamloze Vennootschap  
Zandvoordestraat 300  
B-8400 Ostend, Belgium  
www.daikin.eu  
BTW: BE 0412 120 336  
RPR Oostende



EPLEN07-007